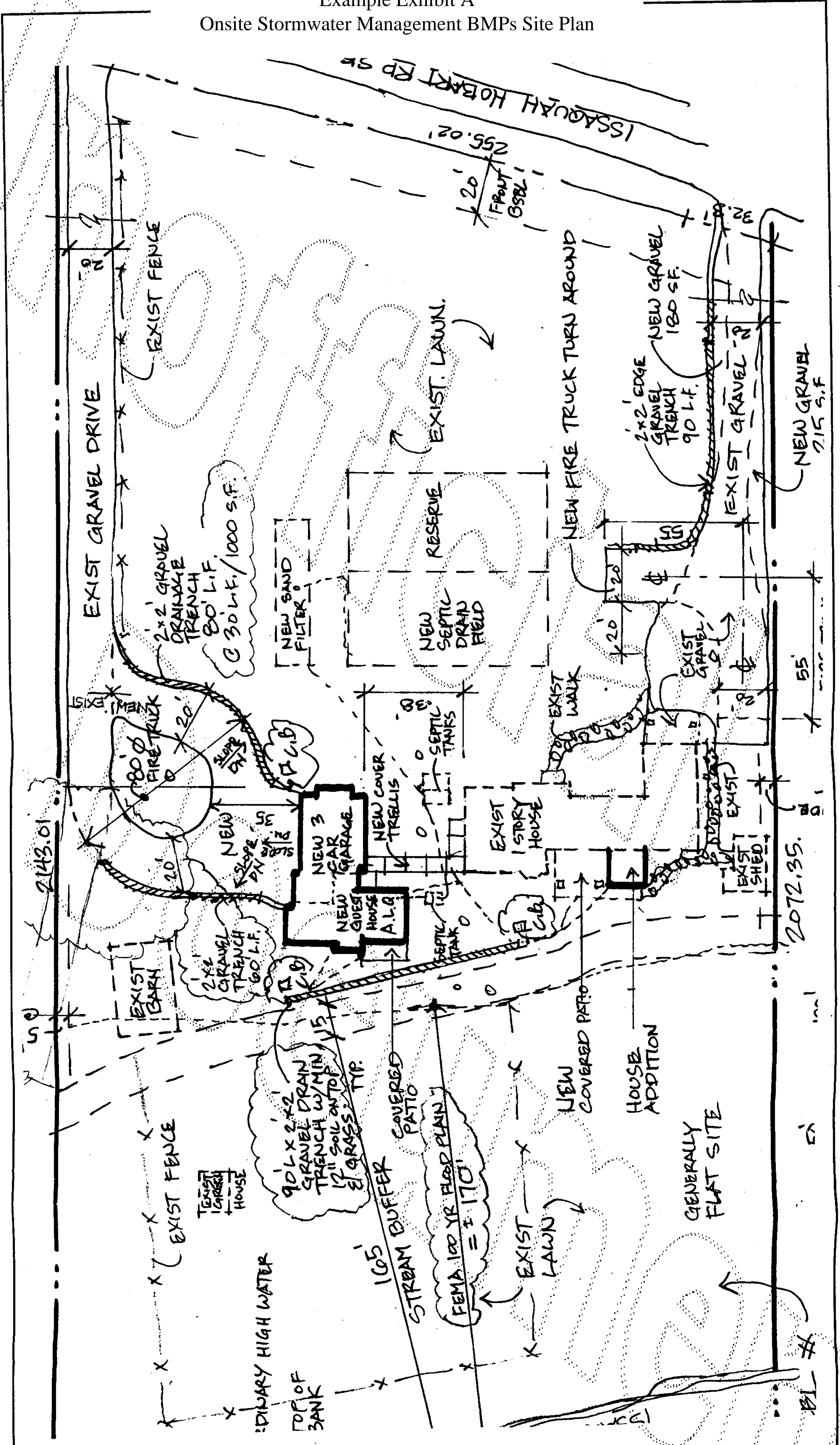


Example Exhibit A
 Onsite Stormwater Management BMPs Site Plan



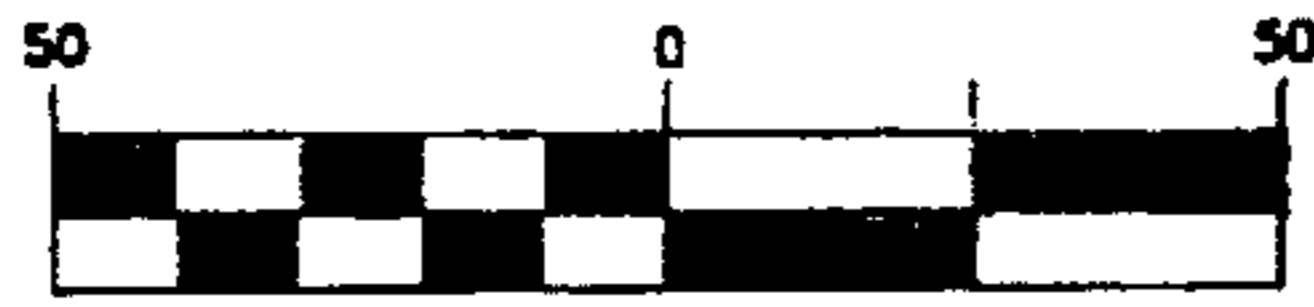
Permit Number: _____

Approved By: _____

Date: 9/14/2012

Example Exhibit A
Onsite Stormwater Management BMPs Site Plan

GRAPHIC SCALE



(IN FEET)

1/4" inch = 50 ft.

DRIVEWAY ENTRANCE
PER 2007 KCRS FIG 3-003
W/12"X36LF LCPE @1.0% MIN.
ASPHALT SURFACE TO R.O.W. LINE

2'WX6"DP
CRUSHED GRAVEL
SHEET FLOW
DISPERSION W/10'
MIN. FLOWPATH
PER FIG C.2.4.D

TYPE 1 CB
RIM-563.0
6" IE IN- 561.0 (N)
6" IE OUT-561.0 (W)
6" IE OUT-561.0 (S)

4-2'WX2'DX30'L
INFILTRATION TRENCHES
PER DETAIL 6" O.C.
104' REQ. LENGTH

TYPE 1 CB
RIM-571.5
6" IE IN- 569.0 (N)
6" IE OUT-569.0 (W)
6" IE OUT-569.0 (S)

TYPE 1 CB
RIM-580.00
4" IE IN- 578.0 (N)
4" IE OUT-578.0 (W)

GARAGE
1823.5 SF

DRIVEWAY
824 SF

WEST LAKE DESIRE RD SE

EX. GRAVEL
DRIVEWAY
1804 SF

CONCRETE
SLAB
596 SF

HOUSE
3684 SF

WELL
LOCATION

2-2'WX2'DX50'L
INFILTRATION TRENCHES
PER DETAIL 6" O.C
84' REQ. LENGTH

2-2'WX2'DX50'L
INFILTRATION TRENCHES
PER DETAIL 6" O.C
90' REQ. LENGTH

IMPERVIOUS AREA

HOUSE ROOF AREA = 3,684 SF
CONCRETE SLAB = 576 SF
DETACHED GARAGE = 1,823.5 SF
PROPOSED DRIVEWAY = 824 SF
TOTAL NEW IMPERVIOUS = 6,907.5 SF
EXISTING DRIVEWAY = 1,804 SF

IMPERVIOUS PERCENTAGE

TOTAL IMPERVIOUS AREA = 8,711 SF
SITE AREA = 31,350 SF
PROPOSED LOT COVERAGE = 27.78%

Approved By _____

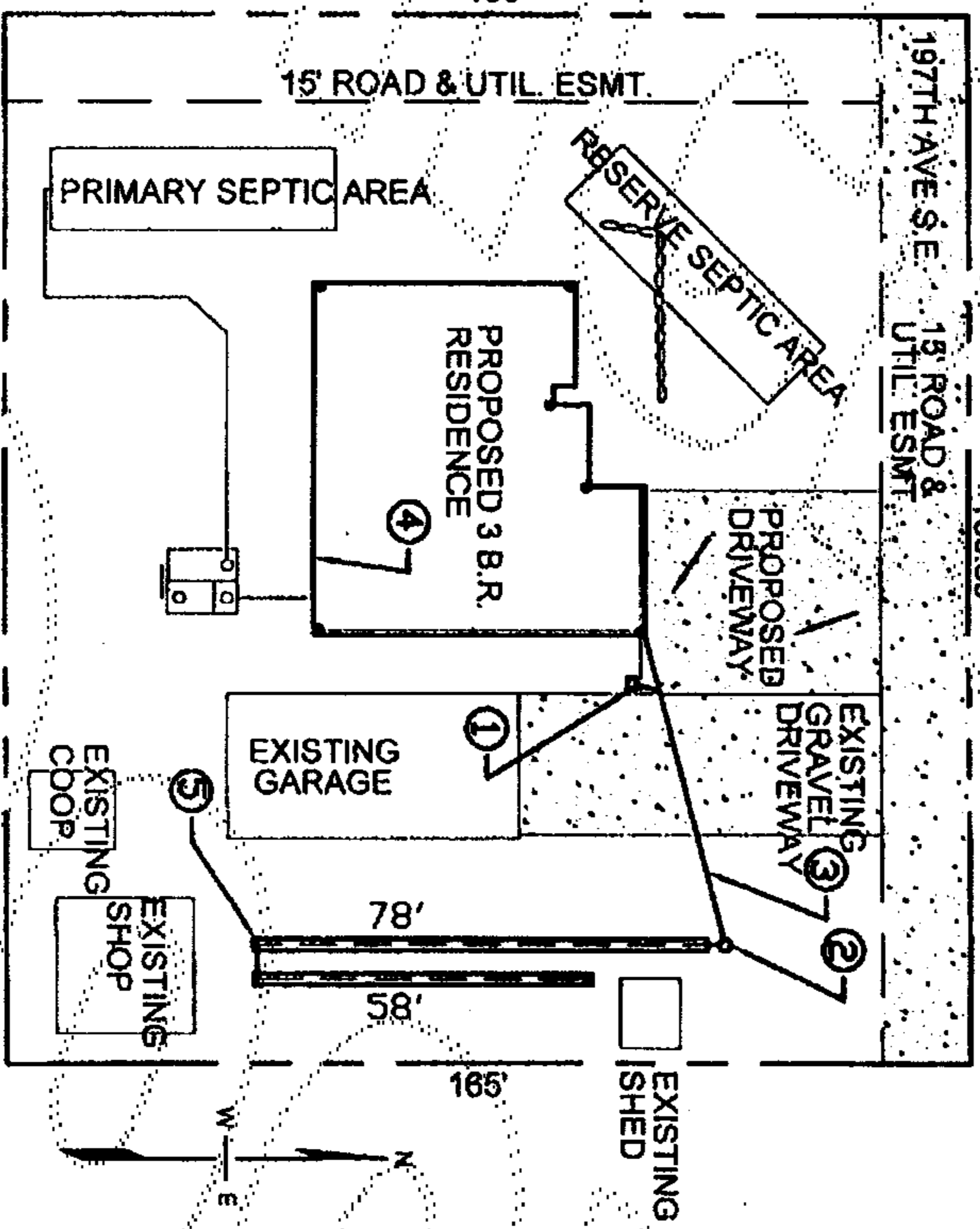
Title: _____

Date: 11/29/2012

Example Exhibit A
 Onsite Stormwater Management BMPs Site Plan

| | |
|-----------------------------|-----------|
| EXISTING CONDITIONS: | |
| DETACHED GARAGE | 1,250 sf |
| SHOP | 552 sf |
| SHED | 125 sf |
| COOP | 195 sf |
| DRIVEWAY | 1,516 sf |
| ROAD | 2,215 sf |
| TOTAL | 6,353 sf |
| PROPOSED CONDITIONS: | |
| HOUSE | 3,016 sf |
| DRIVEWAY | 1,498 sf |
| TOTAL | 4,515 sf |
| TOTAL IMP. SURF. | 10,867 sf |

- ① YARD DRAIN W/DOWNTURNED ELBOW RE: 103 (APPROX.) IE: 101 4' (ND)
- ② SUMP, SEE DETAIL SHEET 2
- ③ 54 LF 4' ADS N-12 @ 1.0% MIN
- ④ 4" SOLID PVC CONNECTING TO ROOF DOWNSPOUTS
- ⑤ INFILTRATION TRENCHES



Permit Number: _____ Approved By _____ Date: 10.15.12